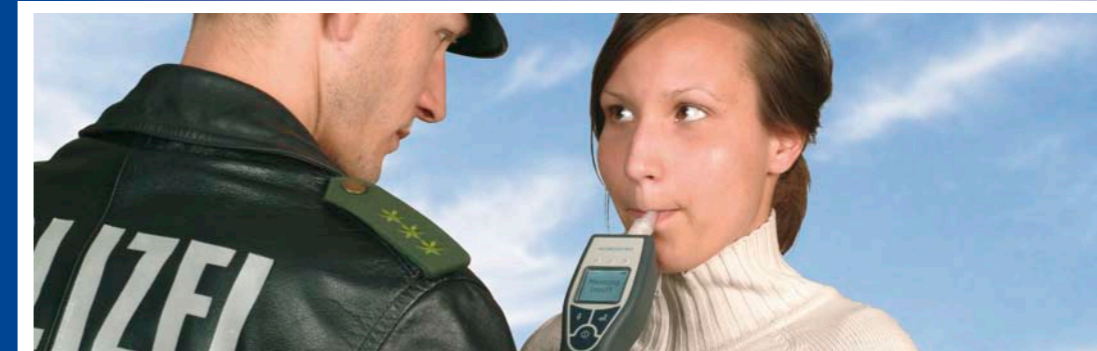


<b>Device:</b>	
Measurement modes:	Active and passive
Measuring range:	0 to 5,0 ‰ BAC
<b>Accuracy</b>	
Max. measuring error according to ethanol standard:	
Range 0 to 1 ‰	± 0,05 ‰ absolute
Range 1 to 2 ‰	± 5 % of measured value
Range > 2 ‰	± 10 % of measured value
<b>Conditions:</b>	
Temperature range operation:	- 5 °C to + 50 °C
Temperature range storage:	- 20 °C to + 60 °C
Best temperature for stock (sensor):	0 °C to + 25 °C
Ambient pressure:	600 to 1400 hPa
Ambient humidity:	20 to 98 % r.h.
Minimum expiration volume (active mode):	1,2 Liter standard or as requested by customer
Batteries:	4 x R6 (AA) Mignon cells or rechargeable NiMH cells
Minimum measurements of battery-Pack:	over 1600 tests, depending on the batteries and the ambient conditions
Device interface:	RS 232 (serial interface). Stored data can be transmitted to a PC or printer.
Dimensions (L x W x H):	190 mm x 61 mm x 38 mm
Weight:	275 g incl. batteries
<b>Miscellaneous:</b>	
Ready for measurement after switching on:	app. 5 second
Ready for next measurement after 0 ‰ measurement:	app. 3 second
Ready for next measurement after 1 ‰ measurement:	app. 5 second
Sensor type:	Electrochemical fuel cell E100
Cross sensitivity:	Negligible through other breath accompanying substances such as acetone, CO, etc.
Mouthpiece socket:	Dependent on mouthpiece (S- or D-Type)
Mouthpiece:	Disposable, S- or D-Type
Units:	User configurable: ‰, ‰, µg/100ml, µg/l, mg/l, g/100ml, mg/100ml, PAF, PAWF, all worldwide used units and modes possible
Operation:	Menu driven through clear text information
Commands:	Three button operation
Power safe mode:	Automatic switch off after 2,5 minutes idle time Automatic switch off back light after 15 sec.
Display:	full-graphic backlight-Display
Data store:	Storage of up to 9999 measured values with date and time
Software:	PC-Software 'Datamanager' for statistical evaluation, data transfer and reporting
Calibration:	Every 6 months
Manipulation:	Impossible due to application of sophisticated software algorithms
Subject to technical changes!	

## AlcoQuant® 6020 Rapid & Reliable Alcohol Breath Testing



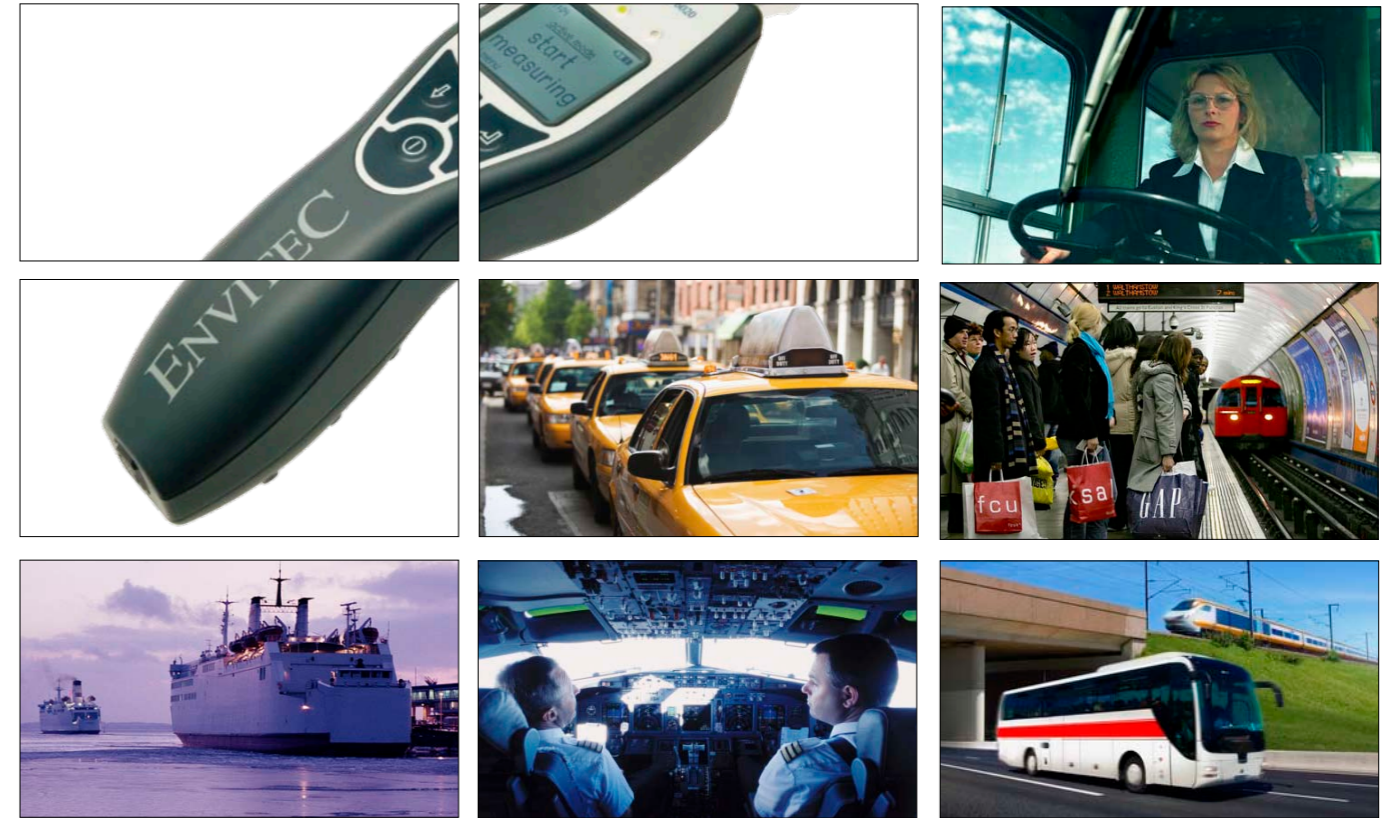
### Innovative Hand-held Breathalyzer

- Fast & Reliable
- Simple & Hygienic Handling
- Excellent data Management

**Distributed by:**



AlcoQuant® 6020  
Your Reliable Partner  
in Alcohol Measurement



## AlcoQuant®- 6020 Rapid and Reliable Alcohol Breath Testing

### Fast & Reliable

The innovative AlcoQuant 6020 from EnviteC is a breath alcohol tester of choice. EnviteC's real expertise and years of experience brings you with AlcoQuant 6020 the latest advantages for professional breath alcohol analysis.

The precise, fast and clear detection of alcohol consumption is in the most cases the only possibility to eliminate or prevent risks.

For the user AlcoQuant 6020 is an easy, rapid and accurate professional testing device designed and intended for use in various applications:

**Traffic police controls**  
**Workplace security**  
**Alcohol treatment clinics**  
**Hospital & Emergency**

**Schools**  
**Research**  
**Probation systems**  
**Correction facilities**

After 5 seconds the AlcoQuant 6020 is ready for the first or the following measurement. Audible and visible signals support the users during the test.

The latest technology based on new electro-chemical sensor for long term signal stability ensures the highest measuring precision.

Thanks to the new energy saving sampling system more than 1600 measurements are guaranteed from one battery pack.

Two measuring modes make testing by cooperating (ACTIVE MODE) as well as by e.g. unconscious non cooperating persons (PASSIVE MODE) easy and safe.



### Simple & Hygienic Handling

User friendly 3 - button operating interface coupled with graphic illuminated display secure comfortable handling and communication.

All messages, device and error status appear in clear text on graphic display making the device entirely self explanatory.

The high hygienic standards for the tested person are secured using low cost mouth-pieces with back flow protection valve to prevent reverse breathing.

During sampling, the AlcoQuant 6020 checks and records the amount of air that is exhaled and steer the remaining flow on side, not into the face of the operating personal.

The ergonomic styled device is comfortable to hold and does not force the operating personal to handover to the tested person during sampling process.

### Excellent Data Management

The device is equipped with a serial PC interface and data memory of 9999 positions, storing full set of information. All the test results can be recalled at anytime.

The collected data can be easily and immediately printed out, transferred to the PCs and statistically evaluated.

AlcoQuant 6020 is also available with Bluetooth wireless data transmission enabling safe and comfortable communication with a range of modern communication tools, including PCs, Mobile Phones & Printers (optional extras)

### New advanced features:

#### New sampling system

- Smaller
- More precise
- Energy saving
- >1600 measurements from one Battery pack

#### New alcohol sensor E100

- Proven
- Faster
- High stability
- Long life

#### Enhanced graphic display

- Backlight illuminated
- Multi language
- Full character display
- Improved readability

#### Intuitive 3-button operation

- Similar to mobile phones
- Simple to use
- Data storage of 9999 results
- All data can be recalled
- PC interface
- Bluetooth capability